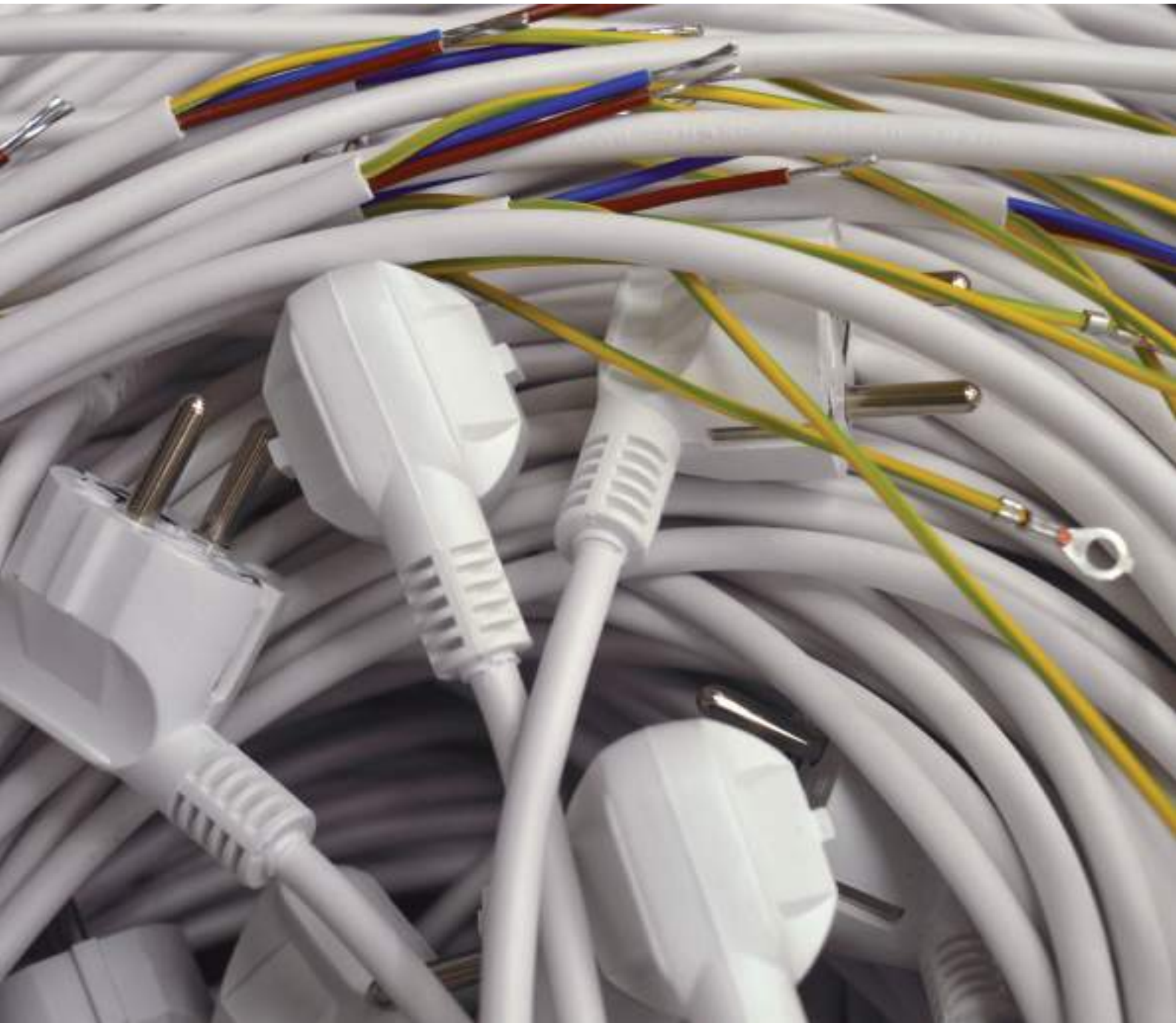


CABLES Y CLAVIJAS

CABLE & PLUGS



CLAVIJAS PLUGS



	REF.	TIPO TYPE	ÁNGULO ANGLE	COLOR	MTS	SECCIÓN SECTION	CERT.	
	M180N04MFIECF	MACHO E+F HEMBRA IEC-320	90° / 0°	Negro Black	1,8	3 x 0.75 mm ²		
	M300N04MFIECF	PLUG E+F SOCKET IEC-320			3			
	M200B04MF9910	MACHO E + F PLUG E + F	90°	Blanco White	2	3 x 0.75 mm ²		
	M300B04MF9910				3			
	M500B04MF9910				5			
	M200N04MF9910			2				
	M300N04MF9910			3				
	M500N04MF9910			5				
	M200B06MF9910			Blanco White	90°	3 x 1.50 mm ²		
	M300B06MF9910							2
	M500B06MF9910							3
	M200N06MF9910							5
	M300N06MF9910							2
	M500N06MF9910							3
	M200B06MG9910	MACHO G PLUG G	90°	Blanco White	2	3 x 1.50 mm ²		
	M300B06MG9910				3			
	M500B06MG9910				5			
	M200N06MG9910			2				
	M300N06MG9910			3				
	M500N06MG9910			5				
	M200B06MB0910	MACHO B PLUG B	0°	Blanco White	2	3 x 1.50 mm ²		
	M300B06MB0910				3			
	M500B06MB0910				5			
	M200N06MB0910			2				
	M300N06MB0910			3				
	M500N06MB0910			5				
	M200B06MK9910	MACHO K PLUG K	90°	Blanco White	2	3 x 1.50 mm ²		
	M300B06MK9910				3			
	M500B06MK9910				5			
	M200N06MK9910			2				
	M300N06MK9910			3				
	M500N06MK9910			5				
	M200B06MM9910	MACHO M PLUG M	90°	Blanco White	2	3 x 1.50 mm ²		
	M300B06MM9910				3			
	M500B06MM9910				5			
	M200N06MM9910			2				
	M300N06MM9910			3				
	M500N06MM9910			5				
	M200B04MI0910	MACHO I PLUG I	0°	Blanco White	2	3 x 0.75 mm ²		
	M300B04MI0910				3			
	M500B04MI0910				5			
	M200N04MI0910			2				
	M300N04MI0910			3				
	M500N04MI0910			5				

Otros modelos consultar / Other models consult

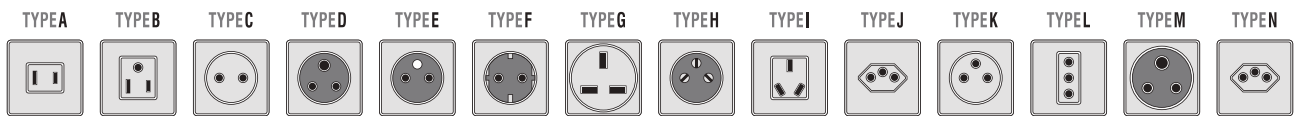
CLAVIJAS HEMBRA

SOCKETS



	REF.	TIPO TYPE	ÁNGULO ANGLE	COLOR	MTS	SECCIÓN SECTION	CERT.
	M200B06FB0910	HEMBRA F SOCKET F	0°	Blanco White	2	3 x 1.50 mm ²	
	M300B06FB0910				3		
	M500B06FB0910				5		
	M200N06FB0910			Negro Black	2		
	M300N06FB0910				3		
	M500N06FB0910				5		

Otros modelos consultar / Other models consult



CABLES

WIRES



B610C001B0001
B610C001G0001

CABLE BLANCO 1 x 0.08 mm²
CABLE GRIS 1 X 0.08 mm²

WHITE 0.08 mm² x 1 WIRE
GREY 0.08 mm² x 1 WIRE



- Flexible multifilar
- Bobina: 610 mts
- Material: PVC
- Sección: 1 x 0.08 mm² AWG28

- Flexible multi-core
- Reel: 610 mts
- Material: PVC
- Section: 1 x 0.08 mm² AWG28

B305C001B0010
B305C001G0010

CABLE BLANCO 1 x 1 mm²
CABLE GRIS 1 X 1 mm²

WHITE 1 mm² x 1 WIRE
GREY 1 mm² x 1 WIRE



- Flexible multifilar
- Bobina: 305 mts
- Material: PVC
- Sección: 1 x 1 mm² AWG17

- Flexible multi-core
- Reel: 305 mts
- Material: PVC
- Section: 1 x 1 mm² AWG17

PARALELO 2 x 0.50 mm²
PARALELO 2 x 1.00 mm²

PARALLEL 0.50 mm² x 2 WIRES
PARALLEL 1.00 mm² x 1 WIRE



- Flexible multifilar
- Bobina: 610 mts
- Material: PVC

- Flexible multi-core
- Reel: 610 mts
- Material: PVC

B610P002NN005: 2 x 0.50 mm² AWG20 Negro-Negro / Black-Black

B610P002BG005: 2 x 0.50 mm² AWG20 Blanco-Gris / White-Grey

B610P002RN005: 2 x 0.50 mm² AWG20 Rojo-Negro / Red-Black

- Flexible multifilar
- Bobina: 305 mts
- Material: PVC

- Flexible multi-core
- Reel: 305 mts
- Material: PVC

B305P002NN010: 2 x 1.00 mm² AWG17 Negro-Negro / Black-Black

B305P002BG010: 2 x 1.00 mm² AWG17 Blanco-Gris / White-Grey

B305P002RN010: 2 x 1.00 mm² AWG17 Rojo-Negro / Red-Black

MANGUERAS

CABLE



MANGUERA PLANA 2 CONDUCTORES

FLAT CABLE 2 WIRE



- Flexible multifilar
- Bobina: 305 mts
- Material: PVC

- Flexible multi-core
- Reel: 305 mts
- Material: PVC

B305OB02BG005: 2 x 0.5 mm² AWG20 Funda Blanca / White cover
Conduct.: Blanco-Gris / White-Grey

B305ON02RN005: 2 x 0.5 mm² AWG20 Funda Negra / Black cover
Conduct.: Rojo-Negro / Red-Black

B305ON02MN005: 2 x 0.5 mm² AWG20 Funda Negra / Black cover
Conduct.: Marrón-Azul / Brown-Blue

B305OB02BG010: 2 x 1 mm² AWG17 Funda Blanca / White cover
Conduct.: Blanco-Gris / White-Grey

B305ON02RN010: 2 x 1 mm² AWG17 Funda Negra / Black cover
Conduct.: Rojo-Negro / Red-Black

MANGUERA PLANA 3 CONDUCTORES

FLAT CABLE 3 WIRE



- Flexible multifilar
- Bobina: 610 mts
- Material: PVC

- Flexible multi-core
- Reel: 610 mts
- Material: PVC

B610OB03RNY02: 3 x 0.22 mm² AWG24 Funda Blanca / White cover
Conduct.: Rojo-Negro-Amarillo / Red-Black-Yellow

B610ON03RNY02: 3 x 0.22 mm² AWG24 Funda Negra / Black cover
Conduct.: Rojo-Negro-Amarillo / Red-Black-Yellow

MANGUERA PLANA 4 CONDUCTORES

FLAT CABLE 4 WIRE



- Flexible multifilar
- Bobina: 610 mts
- Material: PVC

- Flexible multi-core
- Reel: 610 mts
- Material: PVC

B610OB04RN202: 4 x 0.22 mm² AWG24 Funda Blanca / White cover
Conduct.: Rojo-Negro-Amarillo-Verde / Red-Black-Yellow-Green

B610ON04RN202: 4 x 0.22 mm² AWG24 Funda Negra / Black cover
Conduct.: Rojo-Negro-Amarillo-Verde / Red-Black-Yellow-Green

MANGUERA PLANA 6 CONDUCTORES

FLAT CABLE 6 WIRE



- Flexible multifilar
- Bobina: 610 mts
- Material: PVC

- Flexible multi-core
- Reel: 610 mts
- Material: PVC

B610OB06RN402: 6 x 0.22 mm² AWG24 Funda Blanca / White cover
Conductores: Rojo-Negro-Amarillo-Verde-Azul-Blanco
Conductors: Red-Black-Yellow-Green-Blue-White

B610ON06RN402: 6 x 0.22 mm² AWG24 Funda Negra / Black cover
Conductores: Rojo-Negro-Amarillo-Verde-Azul-Blanco
Conductors: Red-Black-Yellow-Green-Blue-White

CABLEADO POLARIZADO PARA LEDS Y ACCESORIOS

CUSTOMIZED WIRED



CÓDIGO CODE	DESCRIPCIÓN DESCRIPTION	
P100BG05XAF03	JST-XAF (BL) + 100 cm 2x0.5 BL/GR LH UL P/E 3 mm JST-XAF (WHT) + 100 cm 2x0.5 WHT/GRY LH UL TINNED 3 mm	
P100RN05XAF03	JST-XAF (BL) + 100 cm 2x0.5 RJ/NG LH UL P/E 3 mm JST-XAF (WHT) + 100 cm 2x0.5 RED/BLK LH UL TINNED 3 mm	
P100NN05XAF03	JST-XAF (BL) + 100 cm 2x0.5 NG/NG LH UL P/E 3 mm JST-XAF (WHT) + 100 cm 2x0.5 BLK/BLK LH UL TINNED 3 mm	
P100BG05XNF03	JST-XAF (NG) + 100 cm 2x0.5 BL/GR LH UL P/E 3 mm JST-XAF (BLK) + 100 cm 2x0.5 WHT/GRY LH UL TINNED 3 mm	
P100RN05XNF03	JST-XAF (NG) + 100 cm 2x0.5 RJ/NG LH UL P/E 3 mm JST-XAF (BLK) + 100 cm 2x0.5 RED/BLK LH UL TINNED 3 mm	
P100NN05XNF03	JST-XAF (NG) + 100 cm 2x0.5 NG/NG LH UL P/E 3 mm JST-XAF (BLK) + 100 cm 2x0.5 BLK/BLK LH UL TINNED 3 mm	
P100BG05XAM03	JST-XAM (BL) + 100 cm 2x0.5 BL/GR LH UL P/E 3 mm JST-XAM (WHT) + 100 cm 2x0.5 WHT/GRY LH UL TINNED 3 mm	
P100RN05XAM03	JST-XAM (BL) + 100 cm 2x0.5 RJ/NG LH UL P/E 3 mm JST-XAM (WHT) + 100 cm 2x0.5 RED/BLK LH UL TINNED 3 mm	
P100NN05XAM03	JST-XAM (BL) + 100 cm 2x0.5 NG/NG LH UL P/E 3 mm JST-XAM (WHT) + 100 cm 2x0.5 BLK/BLK LH UL TINNED 3 mm	
P100BG05XNM03	JST-XAM (NG) + 100 cm 2x0.5 BL/GR LH UL P/E 3 mm JST-XAM (BLK) + 100 cm 2x0.5 WHT/GRY LH UL TINNED 3 mm	
P100RN05XNM03	JST-XAM (NG) + 100 cm 2x0.5 RJ/NG LH UL P/E 3 mm JST-XAM (BLK) + 100 cm 2x0.5 RED/BLK LH UL TINNED 3 mm	
P100NN05XNM03	JST-XAM (NG) + 100 cm 2x0.5 NG/NG LH UL P/E 3 mm JST-XAM (BLK) + 100 cm 2x0.5 BLK/BLK LH UL TINNED 3 mm	
P100BG05XHB03	JST-XHF (BL) + 100 cm 2x0.5 BL/GR LH UL P/E 3 mm JST-XHF (WHT) + 100CM 2x0.5 WHT/GRY LH UL TINNED 3 mm	
P100RN05XHB03	JST-XHF (BL) + 100 cm 2x0.5 RJ/NG LH UL P/E 3 mm JST-XHF (WHT) + 100 cm 2x0.5 RED/BLK LH UL TINNED 3 mm	
P100NN05XHB03	JST-XHF (BL) + 100 cm 2x0.5 NG/NG LH UL P/E 3 mm JST-XHF (WHT) + 100 cm 2x0.5 BLK/BLK LH UL TINNED 3 mm	
P100BG05XHN03	JST-XHF (NG) + 100 cm 2x0.5 BL/GR LH UL P/E 3 mm JST-XHF (BLK) + 100 cm 2x0.5 WHT/GRY LH UL TINNED 3 mm	
P100RN05XHN03	JST-XHF (NG) + 100 cm 2x0.5 RJ/NG LH UL P/E 3 mm JST-XHF (BLK) + 100 cm 2x0.5 RED/BLK LH UL TINNED 3 mm	
P100NN05XHN03	JST-XHF (NG) + 100 cm 2x0.5 NG/NG LH UL P/E 3 mm JST-XHF (BLK) + 100CM 2x0.5 BLK/BLK LH UL TINNED 3 mm	
O100N023XF103	JST-XAF (BL) + 100 cm MG PL. NG 3x0.25 P/E 3 mm JST-XAF (WHT) + 100 cm FLAT CABLE BLK 3x0.25 TINNED 3 mm	
O100B132XF103	JST-XAF (BL) + 100 cm MG PL. BL 4x0.5 RGB P/E 3 mm JST-XAF (WHT) + 100 cm FLAT CABLE WHT 4x0.5 RGB TINNED 3 mm	
M100B142XF103	JST-XAF (BL) + 100 cm MG RD BL 3x0.25+2x0.5MM RGB+W P/E 3 mm JST-XAF (WHT) + 100 cm ROUND CABLE WHT 5x0.25MM RGB+W TINNED 3 mm	

OTRAS LONGITUDES, SECCIONES Y TERMINALES, CONSULTAR
OTHER LENGTHS, CROSS-SECTIONS AND TERMINALS ON REQUEST



Realizamos un crimpado preciso y de alta calidad de diferentes terminales, siguiendo las indicaciones de nuestros clientes.

- Corte y desforrado de mangueras
- Corte, pelado y estañado de cables unifilares y paralelos de varias secciones
- Crimpado de multitud de tipos de terminales

We carry out precise, high-quality crimping of different terminals, following the instructions of our clients.

- *Cutting & stripping multi-core cables*
- *Cutting, stripping and tinning single-core and parallels cables of different sections*
- *Crimp of many types of terminals*

Ejemplos de terminales / Example terminals

TERMINAL REDONDO M3
M3 ROUND TERMINAL



TERMINAL REDONDO M4
M4 ROUND TERMINAL



TERMINAL FASTON HEMBRA 4.8.5
FASTON TERMINAL FEMALE 4.8.5



TERMINAL FASTON HEMBRA 4.8.8
FASTON TERMINAL FEMALE 4.8.8




TERMINAL FASTON MACHO 6.35
FASTON TERMINAL MALE 6.35




TERMINAL FASTON HEMBRA 6.35
FASTON TERMINAL FEMALE 6.35



BOEL-TRONIC® 

 Avda. de la Fama, 118
Pol. Ind. Almeda
08940 Cornellà de Llobregat
Barcelona (Spain)



 T. +(34) 934 216 736

 info@boeltronic.com

 www.boeltronic.com