

BOEL-TRONIC[®]

ELECTRONIC & LIGHTING SOLUTIONS



FICHA TECNICA / DATASHEET

TIRA FLEXIBLE LED / FLEXIBLE LED STRIP

Made in Spain

Ref. **F2008K1424K**



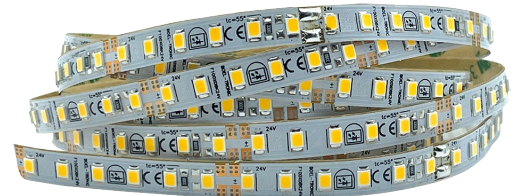
Tira flexible IP20 con 120 leds/metro SMD2835

PCB 8mm

Uso diario máximo recomendado: 18h

Vida útil: 30.000h*

*En función de la disipación del perfil, de las horas diarias trabajadas y de la temperatura externa ambiental de trabajo.



IP20 flexible strip with 120 LEDs/meter SMD2835


PCB 8mm

Recommended maximum daily use: 18h

*Lifespan: 30.000h**

**Depending on the dissipation of the profile, the daily hours worked and the external ambient working temperature.*

- | | |
|--|--------------------------|
| • Potencia / Power (W) | 14W/M |
| • Voltaje / Voltage (V) | 24Vdc/Vcc |
| • Color / Colour (°K) | ± 12500 |
| • Lúmenes/m (Lm/m) | ± 1125 |
| • Smd Led | 2835 |
| • Cri / Ra | ≥ 90 |
| • Ángulo / Angle (>) | 120° |
| • Protección / Protection (IP) | IP20 |
| • LPM | 120 |
| • Medidas / Measures (MM) | 5000 x 8 x 2.2 |
| • Corte / Cut (MM) | 50 |
| • Ancho / Width PCB (MM) | 8 |
| • Temperatura trabajo / Working temperature | -20°C / +40°C |
| • Uso / Use | Interior / Indoor |
| • Regulable / Dimmable | Si / Yes |
| • Clasificación Energética / Energy Classification | G |
| • Embalaje / Packaging | 1pc |
| • Garantía / Guarantee | 3 años / Years |
| • EAN | 8436614472247 |
| • Fabricado en / Made in | España / Spain |



BOEL-TRONIC
F2008K1424K

A

B

C

D


E

F

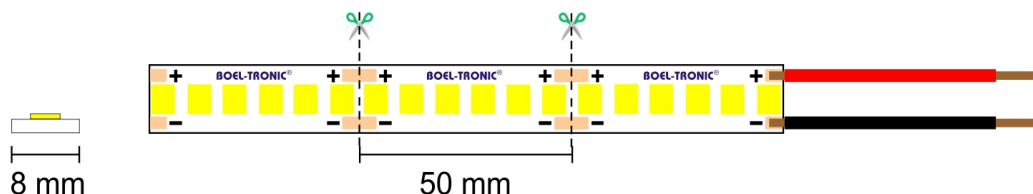
G

G

14
kWh/1000h



2019/2015



TEST CONTROL

Product Mark

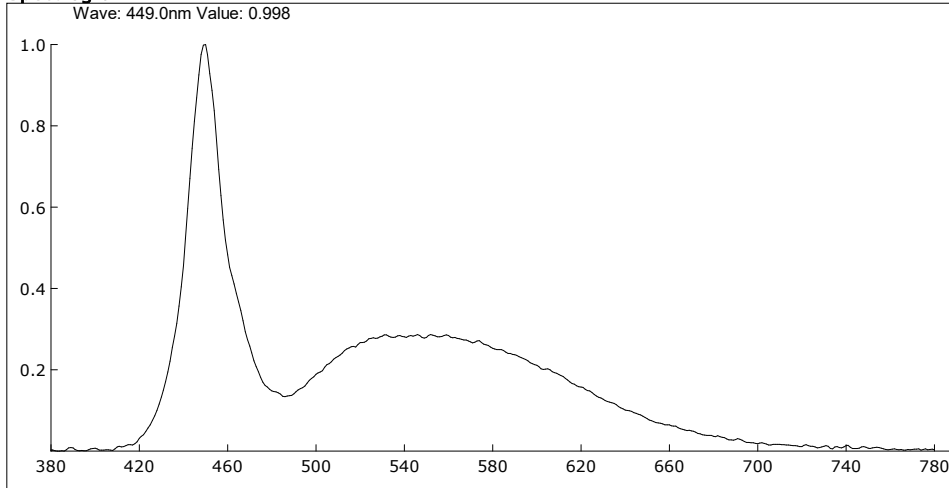
Model:F2008K1424K
Temperature: 20°C
Tester: otecnica

Manufacture: 220923
Humidity: 50%
Test Date: 2023-10-09,07:45:59

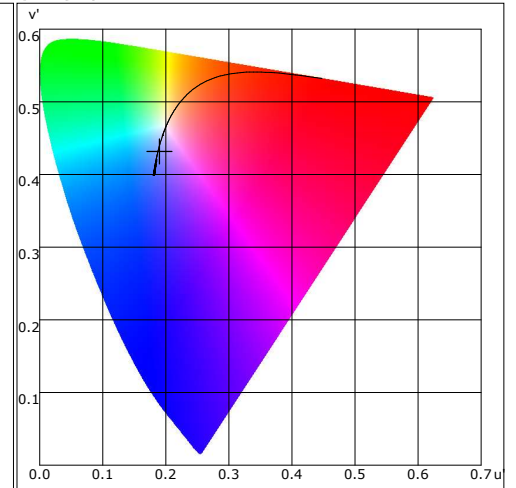
Parameter

Name	Value	Name	Value	Name	Value	Name	Value
E(lx)	112.51	Peak(nm)	449.7				
Candle E(fc)	10.46	Center(nm)	450.2				
CCT(K)	11758	Centroid(nm)	523.7				
Duv	-0.00217	Color Ratio(RGB)	11.2,83.7,5.2				
x,y	0.2742,0.2765	CIE1931 X	163.348				
u,v	0.1901,0.2875	CIE1931 Y	164.731				
u',v'	0.1901,0.4313	CIE1931 Z	267.744				
SDCM	32.64	Integral Time(ms)	363				
Ra	81.2	Peak Signal	57231				
Ee(mW/cm ²)	0.403	Dark Signal	3309				
S/P	2.624	Compensate level	3025				
Dominant(nm)	477.70						
Purity(%)	25.4						
HalfWidth(nm)	19.1						

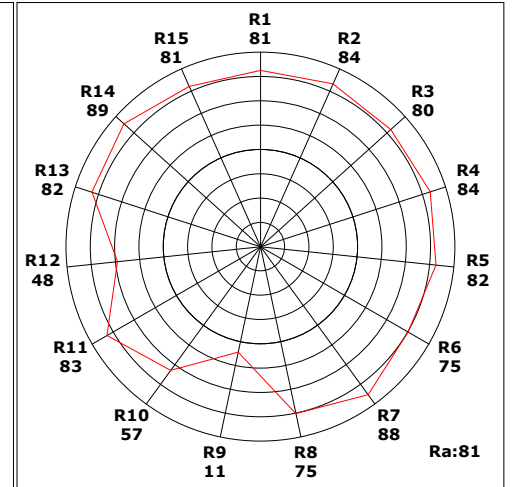
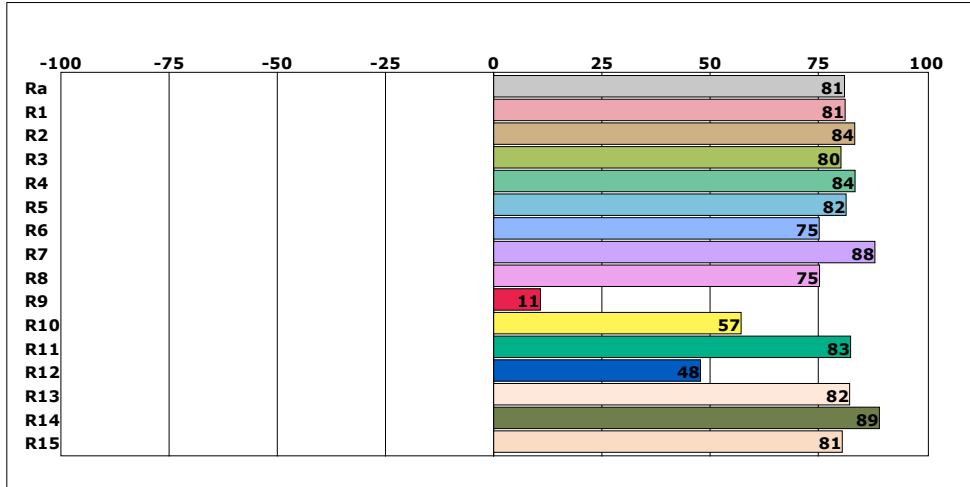
Spectrogram



CIE1976



CRI



Instrument Status

Type: OHSP-300
Integral Time: 362.500ms

SN: 202007134
VPeak: 57231

Scan Range: 380-780nm
VDark: 3309

Remark: