

# BOEL-TRONIC<sup>®</sup>

## ELECTRONIC & LIGHTING SOLUTIONS



FICHA TECNICA / DATASHEET

### TIRA FLEXIBLE LED / FLEXIBLE LED STRIP

Made in Spain

Ref. **F2008K1424X**



Tira flexible IP20 con 120 leds/metro SMD2835

PCB 8mm

Uso diario máximo recomendado: 18h

Vida útil: 30.000h\*

\*En función de la disipación del perfil, de las horas diarias trabajadas y de la temperatura externa ambiental de trabajo.



*IP20 flexible strip with 120 LEDs/meter SMD2835*

*PCB 8mm*

*Recommended maximum daily use: 18h*

*Lifespan: 30.000h\**

*\*Depending on the dissipation of the profile, the daily hours worked and the external ambient working temperature.*

- |  |                          |
|--|--------------------------|
| • Potencia / Power (W)                             | <b>14W/M</b>             |
| • Voltaje / Voltage (V)                            | <b>24Vdc/Vcc</b>         |
| • Color / Colour (°K)                              | <b>± 2700K</b>           |
| • Lúmenes/m (Lm/m)                                 | <b>± 1070</b>            |
| • Smd Led  | <b>2835</b>              |
| • Cri / Ra   | <b>≥ 90</b>              |
| • Ángulo / Angle (>)                               | <b>120°</b>              |
| • Protección / Protection (IP)                     | <b>IP20</b>              |
| • LPM  | <b>120</b>               |
| • Medidas / Measures (MM)                          | <b>5000 x 8 x 2.2</b>    |
| • Corte / Cut (MM)                                 | <b>50</b>                |
| • Ancho / Width PCB (MM)                           | <b>8</b>                 |
| • Temperatura trabajo / Working temperature        | <b>-20°C / +40°C</b>     |
| • Uso / Use  | <b>Interior / Indoor</b> |
| • Regulable / Dimmable                             | <b>Si / Yes</b>          |
| • Clasificación Energética / Energy Classification | <b>G</b>                 |
| • Embalaje / Packaging                             | <b>1pc</b>               |
| • Garantía / Guarantee                             | <b>3 años / Years</b>    |
| • EAN  | <b>8436614472186</b>     |
| • Fabricado en / Made in                           | <b>España / Spain</b>    |

**BOEL-TRONIC**  
F2008K1424X

**A**

**B**

**C**

**D**

**E**

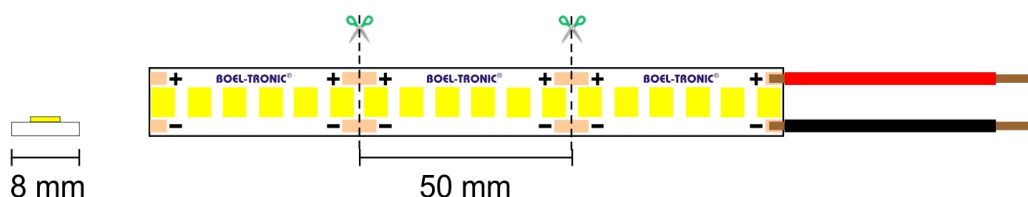
**F**

**G**

**G**

**14**  
kWh/1000h

2019/2015



## TEST CONTROL

### Product Mark

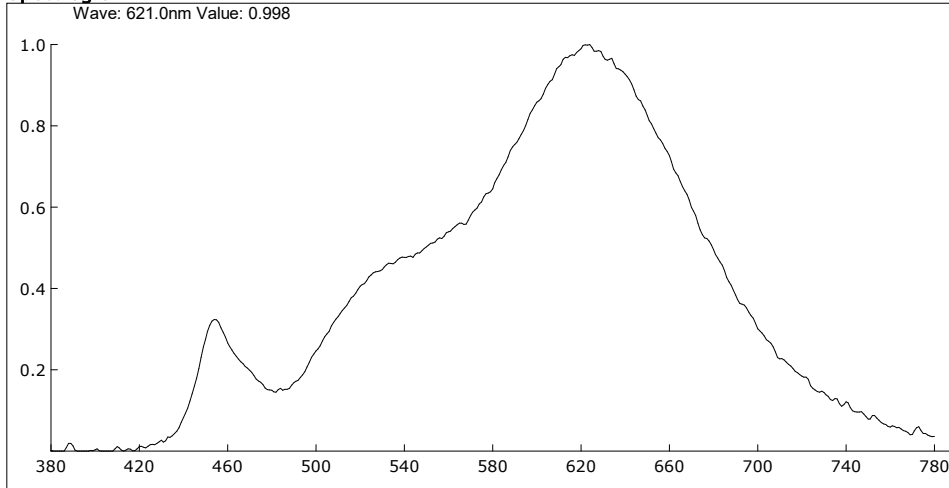
Model:F2008K1424X  
Temperature: 20°C  
Tester: otecnica

Manufacture: 220923  
Humidity: 50%  
Test Date: 2023-10-09,06:58:42

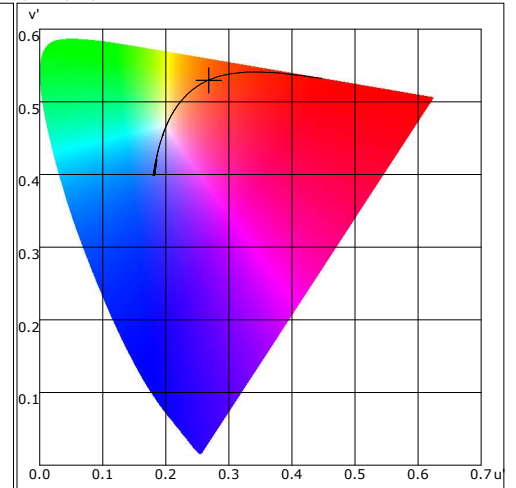
### Parameter

Name	Value	Name	Value	Name	Value	Name	Value
E(lx)	106.32	Peak(nm)	623.9				
Candle E(fc)	9.88	Center(nm)	614.4				
CCT(K)	2576	Centroid(nm)	603.4				
Duv	-0.00015	Color Ratio(RGB)	28.0,70.7,1.3				
x,y	0.4701,0.4122	CIE1931 X	177.514				
u,v	0.2684,0.3530	CIE1931 Y	155.662				
u',v'	0.2684,0.5295	CIE1931 Z	44.443				
SDCM	7.68	Integral Time(ms)	560				
Ra	94.5	Peak Signal	44352				
Ee(mW/cm²)	0.379	Dark Signal	3680				
S/P	1.231	Compensate level	3034				
Dominant(nm)	584.90						
Purity(%)	64.9						
HalfWidth(nm)	131.0						

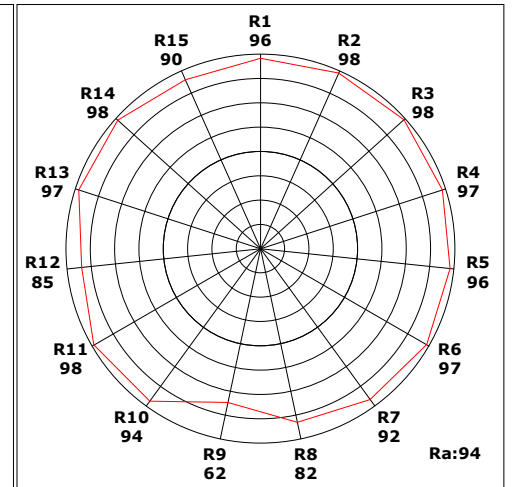
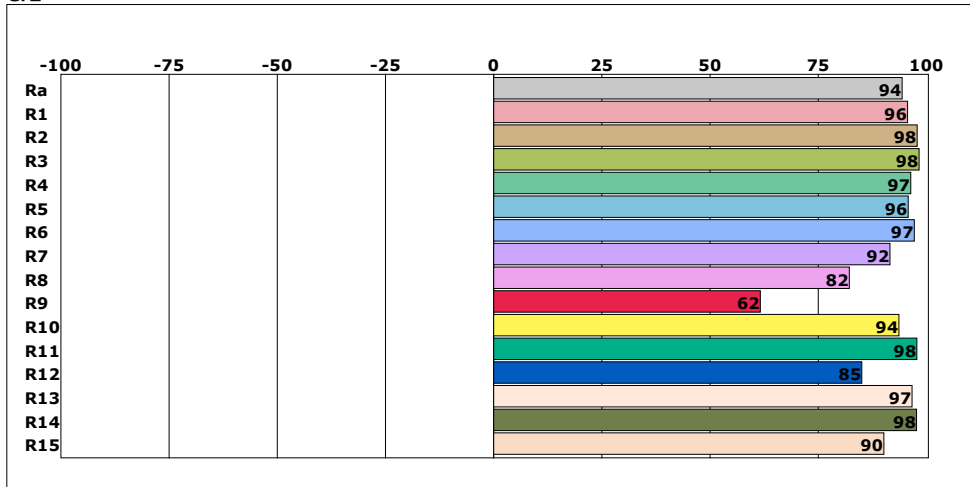
### Spectrogram



### CIE1976



### CRI



### Instrument Status

Type: OHSP-300  
Integral Time: 559.800ms

SN: 202007134  
VPeak: 44352

Scan Range: 380-780nm  
VDark: 3680

Remark: